

PROJECT
Kitchen extension

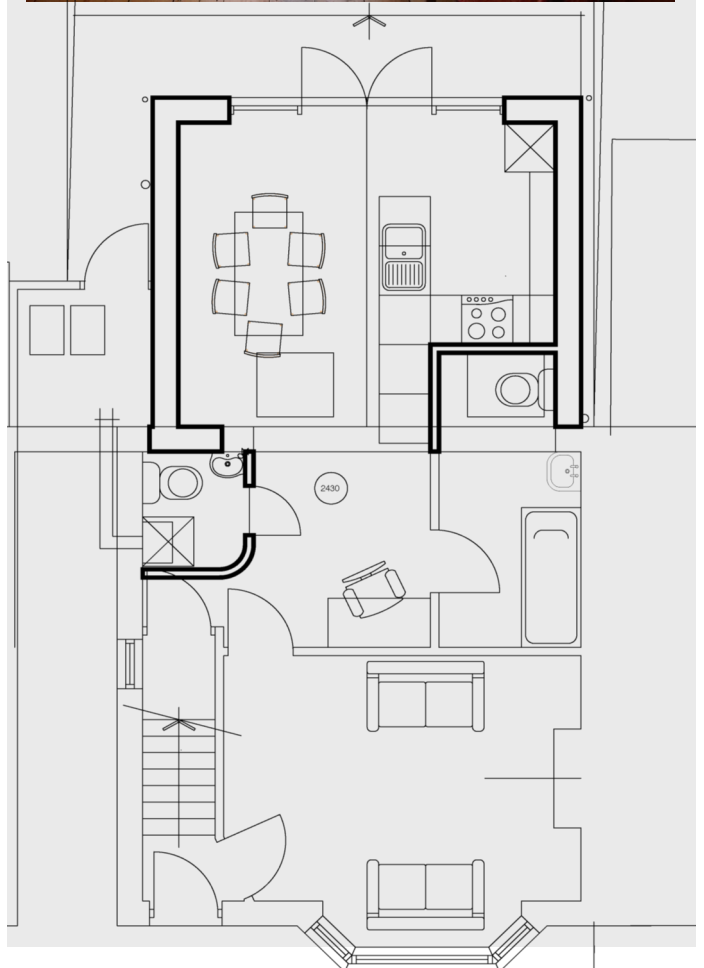
DESIGN SUMMARY

The client required a new kitchen, dining and family room for their terraced house in Oxford to cope with a growing family.

The brief also required a separate utility room and extended ground floor bathroom that retained natural lighting.

Roof windows were used to ensure that rooms deeper in the house retained natural light. A large timber framed glass screen at the rear of the extension links the newly created internal space to the garden and creates a new focus for the house.

The new room has now become the hub for visitors and the family.



Free **one hour**
initial consultation

Contact us now to book your session

Get in **touch**
01865 407722

